



HUMANITARIAN FACTSHEET ON AREA C OF THE WEST BANK

JULY 2011

AREA C FAST FACTS

- Over 60 percent of the West Bank is considered Area C, where Israel retains control over security, planning and zoning.
- An estimated 150,000 Palestinians live in Area C, including 27,500 Bedouin and other herders.
- 55% of Bedouin / herding communities are food insecure.
- More than 20% of communities in Area C have extremely limited access to health services.
- Water consumption dips to 20 litres/capita/day (l/c/d) in communities without water infrastructure, one-fifth of the World Health Organisation's recommendation.
- Communities depending on tankered water pay up to 400% more for every liter than those connected to the water network.
- 70% of Area C is off-limits to Palestinian construction; 29% is heavily restricted.
- Less than 1% of Area C has been planned for Palestinian development by the Israeli Civil Administration.
- 342 Palestinian-owned structures, including 125 residential structures and 20 rainwater collection cisterns, were demolished by the Israeli authorities in the first half of 2011.
- 656 people, including 351 children, lost their homes in the first half of 2011, almost five times more than within the same period last year. One-third of these people were displaced in June 2011 alone.
- Over 3,000 demolition orders are outstanding, including 18 targeting schools.
- The planned expansion area of the around 135 Israeli settlements in Area C is 9 times larger than their built-up area. (B'Tselem). Approximately 300,000 settlers currently live in Area C.

- Most of Area C has been designated as military zones and for expansion of Israeli settlements, severely constraining the living space and development opportunities of Palestinian communities.** While it is virtually impossible for a Palestinian to obtain a permit for construction, Israeli settlements receive preferential treatment in terms of allocation of water and land, approval of development plans, and law enforcement.
- There has been a marked increase in demolitions in Area C this year.** More Palestinians lost their homes in Area C in the first half of 2011 than in either of the past two years.
- Most demolitions in 2011 affected livelihood structures,** negatively affecting the sources of income and living standards of some 1,300 people.
- In addition to restrictive planning policies, **Palestinians living in Area C also have to contend with a range of other Israeli policies and practices,** including restrictions on movement and access, harassment from the Israeli military and settler attacks, **making daily life a struggle.**
- Demolitions drive already poor families deeper into poverty.** Most demolitions in 2011 have targeted already vulnerable Bedouin / herding communities, who live in very basic structures, with no infrastructure and very limited access to services. Demolitions increase the dependency of these families on humanitarian assistance and have a range of negative psycho-social impacts, particularly on children. Many of these communities have suffered multiple waves of demolitions.
- In some communities, families are being forced to move as a result of Israeli policies applied in Area C.** Ten out of 13 communities recently visited by OCHA reported that families are leaving because policies and practices implemented there make it difficult for residents to meet basic needs or maintain their presence on the land.



Restriction

- Israeli Closed Military Area
Access is prohibited
- Existing and Projected "Closed Areas" Behind the Barrier
Access is limited to permit holders

Border

- International Border
- Armistice Line (Green Line)

Oslo Agreement

- Area A
- Area B
- Area C & "Wye River" Nature Reserves
- Israeli Unilaterally Declared Municipal Area of Jerusalem¹

1. In 1967, Israel occupied the West Bank and unilaterally annexed to its territory 70.5 km² of the occupied area

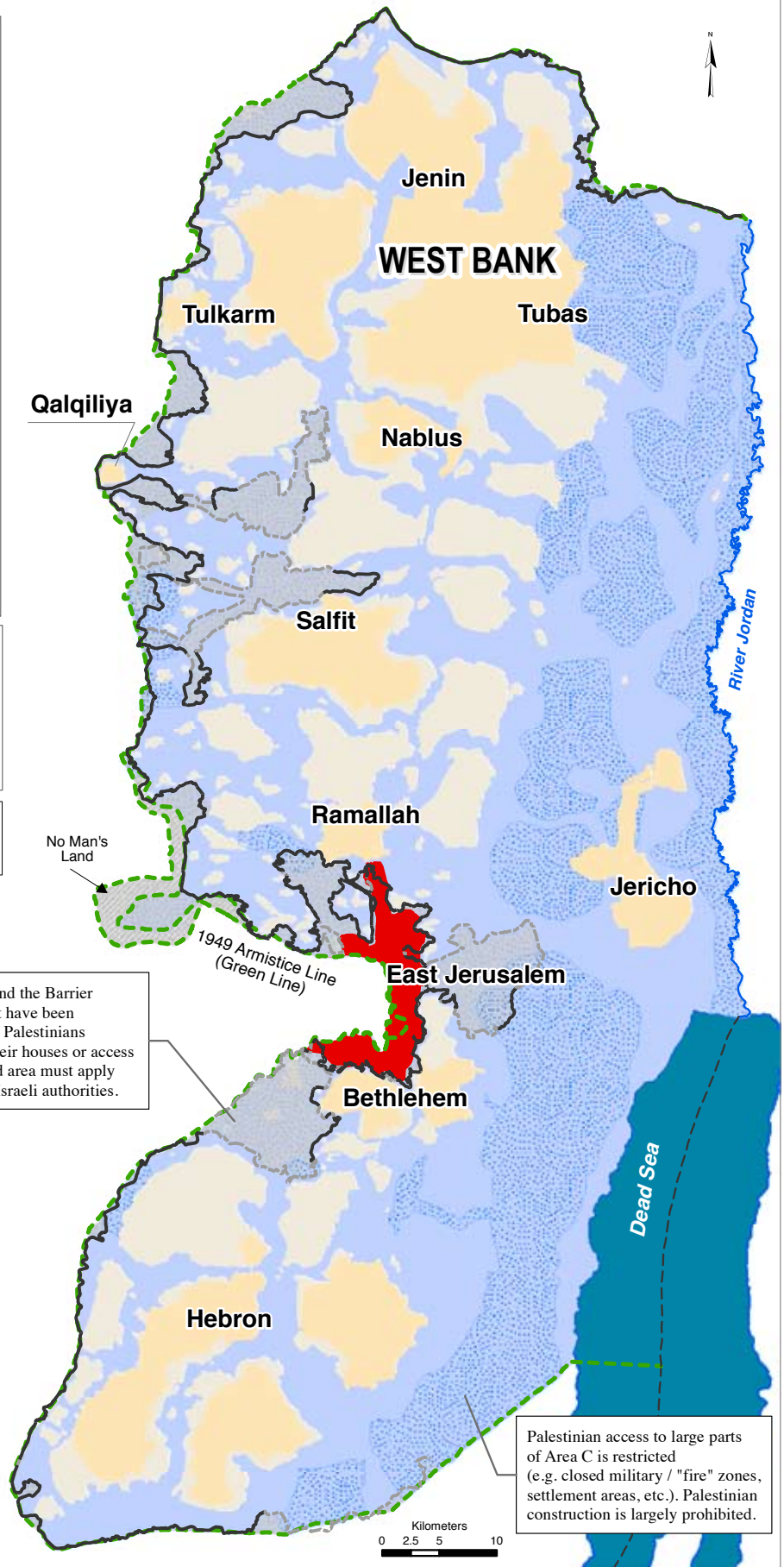
Barrier

- Constructed / Under Construction
- Planned

Oslo Interim Agreement

Area A : Full Palestinian civil and security control
 Area B: Full Palestinian civil control and joint Israeli-Palestinian security control
 Area C: Full Israeli control over security, planning and construction

United Nations Office for the Coordination of Humanitarian Affairs
 Cartography: OCHA-oPt - June 2011. Base data: OCHA, PA MoP, JRC update 08. For comments contact <ochaopt@un.org> or Tel. +972 (02) 582-9962 http://www.ochaopt.org



Much of the land behind the Barrier is Area C. In parts that have been declared "seam zone", Palestinians wishing to reside in their houses or access their land in the closed area must apply for a permit from the Israeli authorities.

Palestinian access to large parts of Area C is restricted (e.g. closed military / "fire" zones, settlement areas, etc.). Palestinian construction is largely prohibited.

